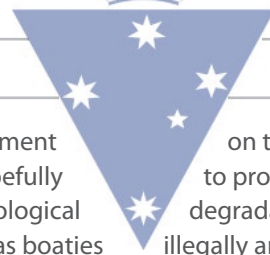


Victoria



Heritage Victoria

Shipwreck Discovery

Congratulations to Sandy Varin and David Bardi, who, after two years of searching, discovered a new shipwreck off the east coast of Victoria. The wreck is sitting upright on a sandy bottom at a depth of 116m. The vessel, estimated to be roughly 80–100m in length, is reportedly in good condition, with its boilers and cargo visible. While there are a couple of likely contenders, the wreck will not be formally identified until more information has been gathered.



The boilers of the unidentified shipwreck at Lakes Entrance. (Photo by David Hurst)



Winches on the unidentified wreck at Lakes Entrance. (Photo by David Hurst)

ADAS Training

In May and September, Toni Massey and Rhonda Steel completed the ADAS Part 1 Restricted (Scientific Diver) diving course. The course was run through Professional Divers Training Academy in Albury and included theory lectures and exams as well as pool and open water sessions. Both had an awesome



Toni Massey and Rhonda Steel train with tethered SCUBA at 'The Pit' in Albury. (Photo by Toni Massey)

time on the course and enjoyed learning more about commercial diving and the use of tethered SCUBA. Diving in low visibility with cars, pipes, trees and bridge pylons was a challenge, but they had a great group of students and excellent instructors. Toni's favourite part was working with tools underwater, while Rhonda enjoyed the challenge of finding her way around the bridge pylons in zero visibility. Despite flu and ear infections, they thoroughly enjoyed the course and would recommend it to anyone who might be interested. Thanks to Rick, Naomi, Mark and Mal for all their help.

Clarence

HV has been busy gearing up for the final session of Clarence fieldwork for the ARC project. The HV Maritime Team will head out with a number of partners to complete the reburial of the site from 16–27 November. This final phase will involve the use of geotextile, tarps and sandbags to create an anaerobic



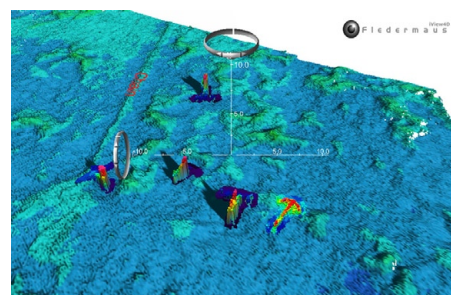
The Clarence shipwreck site. (Photo courtesy of Heritage Victoria)

environment site hopefully from biological as well as boaters illegally anchoring over the site.

on the to protect it degradation illegally anchor-

Anchor Farm

Victoria's 'Anchor Farm' has gained a few new members. We now have eight anchors located north of the Pope Eye Annulus in Port Phillip. Most of these anchors were uncovered as a result of the Channel Deepening Project undertaken by the Port of Melbourne. The anchors were discovered in shipping channels or near piers and posed a potential hazard to navigation, so were relocated to the Anchor Farm. Shortly, we will place a plaque on each anchor that will detail where it was found, what type it is and any other relevant information we might gather. We hope that this will become a popular dive site and provide a unique way to explore Victoria's heritage.



Multi-beam image of the initial stages of the Anchor Farm. (Image courtesy of the Port of Melbourne Corporation)

Guidelines

Guidelines are being developed by Heritage Victoria to inform the conduct of maritime cultural heritage surveys in Victoria. They detail the legislative, research and field investigation requirements for cultural heritage surveys and assessments. The Guidelines for Conducting Maritime Archaeological Surveys in Victoria provide developers, project managers, government departments